

**BIO SERIE**  
**140/170/220**

**ECOSIR**  
GROUP

**Automatic  
vacuum food  
waste transfer  
solution**



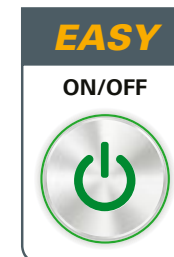
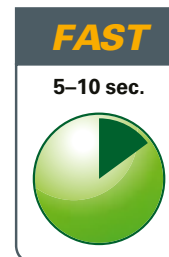




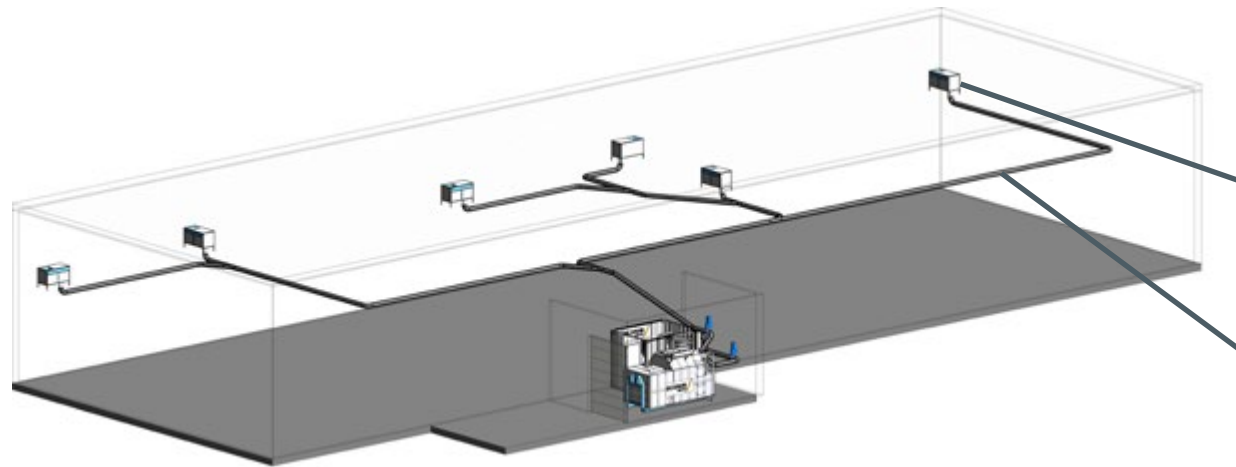
# Fresh food – happy people

BIO vacuum waste system series

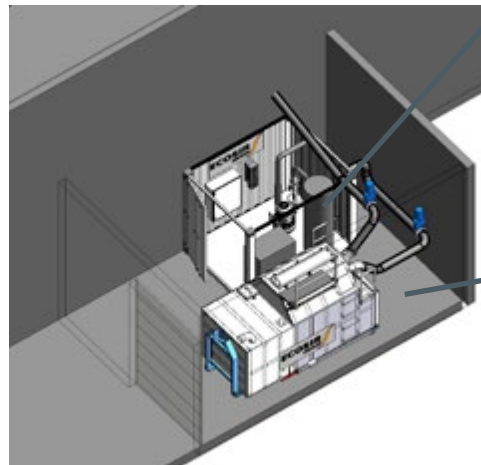
- Provides a good professional kitchen environment – waste logistics is inline with food processing automation
- More time for making food – the automatic waste transfer system minimizes disturbances and release time for valuable work
- It is the most hygienic solution for today's food waste handling



# System illustration



- A) Drop&Go -inlets (1–50 pcs.)
- B) Control panels and valves
- C) Sealed vacuum pipeline network with valves
- D) Vacuum blower unit
- E) Filter unit
- F) Frequency converter
- G) System control cabinet and program
- H) Air compressor with pipes
- I) Food waste vacuum container



BIO SERIE 140/170/220

# Drop&Go™

## - waste inlets

- Separate waste inlet unit or integrated with control panel and signal lights
- Stainless steel – Easy to use and to keep clean
- No shredders needed
- Highest reduction in used fresh water – transfer by vacuum power



It is so *Easy*  
– Just *Drop & Go!*





# Machine room and main equipment

- Vacuum system machinery, system control and sealed vacuum container
- Small space needed for vacuum system machines – (2×3×2m)
- Display in control cabinet
- Possibility to communicate with the building main control system via an optional ethernet or WIFI connections
- Remote On-Line system for reporting and remote control (optional)
- The sealed vacuum container can be located indoor / outdoor – sizes 6m<sup>3</sup>, 8m<sup>3</sup> or 10m<sup>3</sup>



Vacuum system control unit with frequency inverter (VLT)



Compact™-machine room module



Waste vacuum container (outdoor)

# Technical data and options



SYSTEM MAIN PARTS	Standard	Option
Waste inlets cone, lid, lid open/close sensor, stand alone legs	•	—
Inlet user control panel - led indicators	•	—
Inlet discharge valve for batch release and line cut-off	•	—
Pipe network - Stainless steel D140/170/220mm	•	—
System internal control wiring	•	—
Waste vacuum container 6m <sup>3</sup> with guiding rails, in/out flow connection closing valves	•	—
Sealed design fine particle filter unit	•	—
Vacuum power blower 35kW with inverter and program	•	—
Control cabin for BIO-serie	•	—
System program for BIO-serie	•	—
Optional features		
High vacuum power unit 45kW with acoustic hood in vacuum power cabin for large systems or demanding applications, including flow control inverter 55kW.	—	•
Sealed odor filter unit to clean odors from exhaust air	—	•
Waste vacuum containers 8m <sup>3</sup> and 10m <sup>3</sup>	—	•
Motorised sewage water separation unit	—	•
Air compressor and compressed air pipe for system components	—	•
Installation supervision	—	•
ROLS Remote-On-Line-Monitoring	—	•
Service contract		•





Several tens of vacuum food waste  
BIO-serie references worldwide in  
university hospitals, central hospitals,  
care centers, educational units  
and military campuses in Asia/  
China, the EU- Denmark, the Baltic  
countries, Finland







[www.ecosir.com](http://www.ecosir.com)

CAREMASTER

CARE 220

BIO 140/170/220

SHAFTLINE

CITYMASTER

SERVICE CARE

All rights reserved © Ecosir Group EGC0M0225DOC. The pictures may include optional features.